

# SKF Vibracon

– surface treated chocks

SKF Vibracon chocks are permanent, and re-usable machinery mounting chocks for all types of rotating or critically aligned machinery.

Many installations where the SKF Vibracon chocks are applied can be found in tough, humid and salty climates, where protection against corrosion is advised. To cater for this need, SKF has been testing different solutions resulting in the surface treated SKF Vibracon chock.

All parts are treated individually to guarantee an optimal result, consistent quality and extended corrosion protecting capabilities.

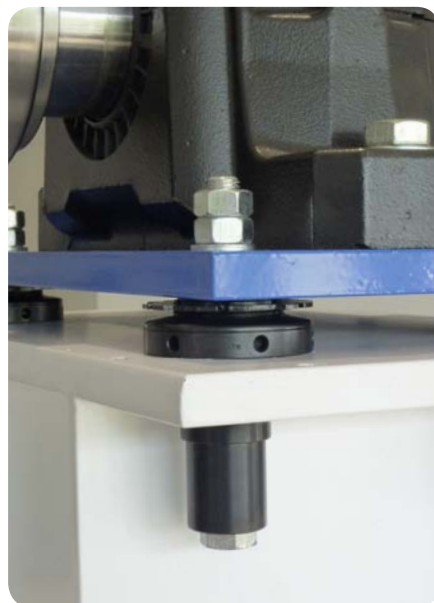
SKF Vibracon surface treated chocks are a complementary option to our wide product range.



*Surface treated SKF Vibracon chock*



*Surface treated SKF Vibracon low profile chock*



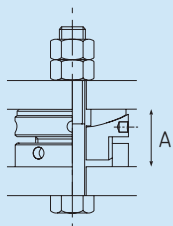
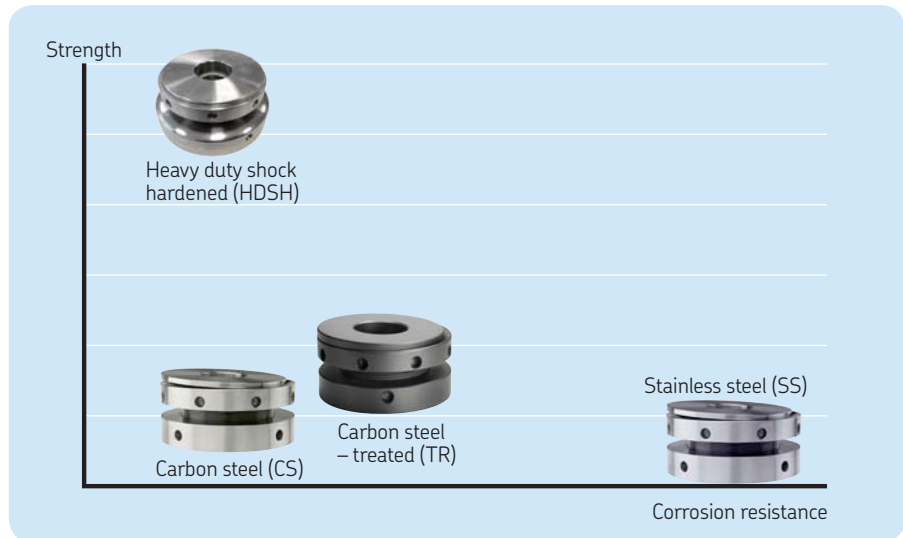
## General features SKF Vibracon

- Eliminate soft foot
- Large adjustment range
- Significant self-leveling capacity
- Easy to use
- High quality installation

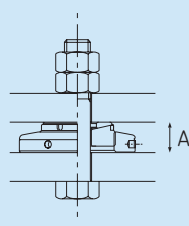
## Extra features for the surface treated SKF Vibracon chock

- Improved corrosion resistance compared to carbon steel version
- Better priced than stainless steel version

Please contact [vibracon@skf.com](mailto:vibracon@skf.com) for more information.



Surface Treated  
SKF Vibracon



Surface treated  
SKF Vibracon low profile

Vibracon type	Standard bolt size range	Max. bolt size <sup>1)</sup> (optional)	Max. element load <sup>2)</sup>	Min. height	(A) Nominal height	Max. height	Bolt hole	Outer diameter	Thread pitch	Mass
–	Metric	Metric	kN	mm	mm	mm	mm	mm	mm	kg
SM 12 -CSTR	M12-M14	M16	48	30	34	38	17	60	1	0,6
SM 16 -CSTR	M16-M18	M20	90	35	40	45	21	80	1,5	1,2
SM 20 -CSTR	M20-M22	M24	140	40	45	50	25	100	2	2,2
SM 24 -CSTR	M24-M27	M30	200	45	51	57	31	120	2	3,5
SM 30 -CSTR	M30-M33	M36	325	50	56	62	37	140	2	5,3
SM 36 -CSTR	M36-M39	M42	475	55	61	67	44	160	2	7,5
SM 42 -CSTR	M42-M45	M48	675	60	66	72	50	190	2	12
SM 48 -CSTR	M48-M52	M56	850	70	77	85	60	220	3	17,0
SM 56 -CSTR	M56-M60	M64	1 150	75	82	90	66	230	3	23,0
SM 64 -CSTR	M64-M68	M72	1 500	80	87	95	74	250	3	27,0
SM 16 LP-ASTR	M16-M18	M20	90	20	25	30	21	80	1,5	0,6
SM 20 LP-ASTR	M20-M22	M24	140	20	25	30	25	100	2	0,9
SM 24 LP-ASTR	M24-M27	M30	200	20	25	30	31	120	2	1,3
SM 30 LP-ASTR	M30-M33	M36	325	20	25	30	37	140	2	1,8
SM 36 LP-ASTR	M36-M39	M42	475	30	35	40	44	160	2	3,7
SM 42 LP-ASTR	M42-M45	M48	675	35	40	45	50	190	2	6,2

<sup>1)</sup> For an engineered solution, please contact [vibracon@skf.com](mailto:vibracon@skf.com)

<sup>2)</sup> Including safety factor

© SKF and Vibracon are registered trademarks of the SKF Group.

© SKF Group 2014

The contents of this publication are the copyright of the publisher and may not be reproduced (even extracts) unless prior written permission is granted. Every care has been taken to ensure the accuracy of the information contained in this publication but no liability can be accepted for any loss or damage whether direct, indirect or consequential arising out of the use of the information contained herein.

PUB 43/P2 14497 EN · May 2014

Certain image(s) used under license from Shutterstock.com

